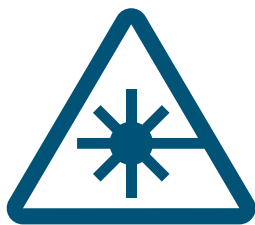


SENSORITY

# WASTE MANAGEMENT



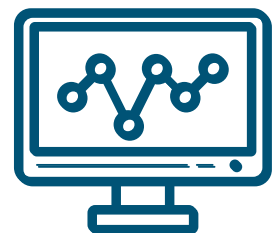
## LASER SENSOR

Continuously measures the fill levels. Tested for all major types of waste containers



## SIMPLE INSTALLATION

Wirelessly connected via IoT network, works on a battery that lasts for several years



## SMART APPLICATION

Administration, graphic dashboard, reporting and history. Integration with customer IS



info@sensority.eu | +420 603 545 944 | www.sensority.eu

# DISTSENSE

The DistSense device monitors fill level of waste containers in adjustable intervals. It uses infrared laser technology in order to lower energy consumption and increase battery life. To further refine measurement the laser beam direction and width could be adjusted.

The device is wirelessly connected to the Internet via an IoT network, data transmission is encrypted, data are processed and stored in Cloud. Data could be then shared with customer platform or displayed in our web application.

## Wireless Sensors

Function: distance (up to 4m), temperature, tilt, battery status  
Battery: changeable 8500mAh, 3-5 years of operation  
Network: NB-IoT, SigFox  
Installation: screws, magnet



### DistSense Long

Dimension: 77 x 43 x 36 mm  
Color: grey (or as required)  
Use: bottom dump containers, containers for used textiles or electrical waste



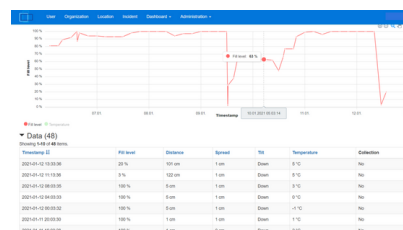
### DistSense Line

Dimension: 76 (94) x 38 x 29 mm  
Color: according to color of waste container  
Use: containers with top dump (typically 110 -1100 l)



## Smart Application

- Organization definition and access rights
- Devices management & configuration
- Location of devices
- Containers' fill levels (in %, in cm)
- Dump detection
- Graphs, statistics, reports



**SENSORITY, s.r.o**

Jugoslávských partyzánů 1580/3, 160 00 Praha, Czech Republic

info@sensority.eu

+420 603 545 944